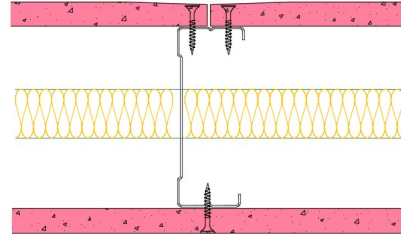


92-S-55(25) - SPEEDLINE System Data Sheet - Version V1 (24-10-23)

SPEEDLINE 92mm 'C' Stud Partition @600mm Ctrs,
with Siniat GTEC 12.5mm Fire Board each side,
25mm APR



System Performance Breakdown

Fire Resistance:

BS476 Part 22:1987:

Test Ref & Date or Applied Ref & Report:

Max Height:

Thickness:

Duty Grade: BS 5234: Part 2:1992:

Sound Insulation:

30/30 Minutes (Integrity/Insulation).

BRE 269826 - BRE Report P102396-1011C

Refer to Speedline Specification Clause

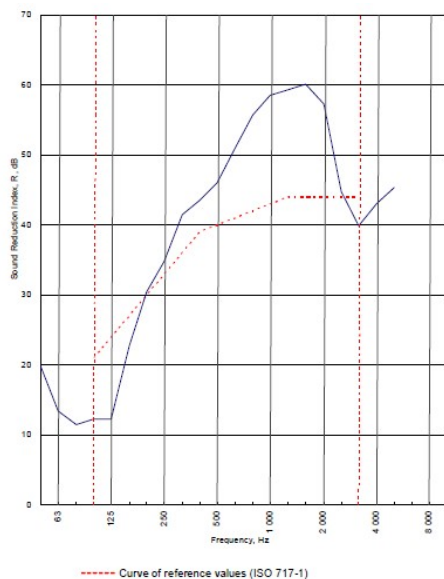
119 mm. (At Base Track, Excluding Finishes)

Medium - Annexes A-F

40 R_wdB, Date Tested or Assessed Against - 70-S-51(25)

Test Code:
H17461AA
Test Date:
01/07/2011

Freq. Hz	R dB
50	19.7
63	13.4
80	11.4
100	12.3
125	12.3
160	22.7
200	30.4
250	34.8
315	41.5
400	43.5
500	46.0
630	51.0
800	55.7
1 000	58.6
1 250	59.3
1 600	60.1
2 000	57.3
2 500	44.8
3 150	39.9
4 000	43.1
5 000	45.3
6 300	
8 000	
10 000	





Rating according to BS EN ISO 717-1:1997
R_w (C;Ctr) = 40 (-5;-11) dB
Max dev. 11.7 dB at 125 Hz


Evaluation based on laboratory measurement results obtained by an engineering method:


C ₅₀₋₃₁₅₀ = -5 dB	C ₅₀₋₅₀₀₀ = -4 dB	C ₁₀₀₋₅₀₀₀ = -4 dB
C _{2,500-1500} = -13 dB	C _{2,50-5000} = -13 dB	C _{2,100-5000} = -11 dB

TESTED AT ONE OF THE UKAS ACCREDITED LABORATORIES BELOW

B.T.C (H-Ref on Graph) 

B.R.E 

AIRO 

S.R.L 

Customer: Metsec plc Hespsec Division

BTC 17461A: Page 9 of 11



SPEEDLINE Drywall Systems, Adsetts House, 16 Europa View, Sheffield Business Park, Sheffield, S9 1XH.

Tel: 0114 231 8030.

Email: enquiries@speedlinedrywall.co.uk

(As per the requirements set out in ISO/IEC 17025:2017 regarding test data the results stated have been carried out by voestalpine Metsec plc as part of the contract to supply Speedline Metal Sections to SIG Plc)